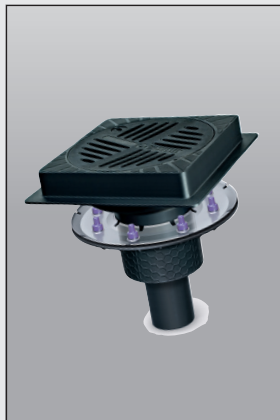


KESSEL - Parkdeckabläufe aus Ecoguss

Auslauf senkrecht DN 100 / DN 125



Produktvorteile

- Geringes Gewicht
- Einfachster Einbau
- Durch Verwendung von Zwischenstücken ist jedes geforderte Bodenniveau anpassbar
- Optimale Rohrreinigung durch Herausnehmen des Schlamm-eimers



Dehnfuge zwischen Endbelag und Aufsatzstück legen.

Produktbeschreibung



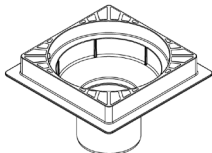
①



②



③



④

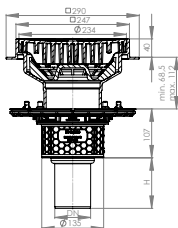
① Schlüssel

② Rost mit Lock & Lift-System

③ Schlammeimer

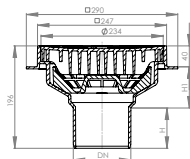
④ Grundkörper

Maßzeichnung



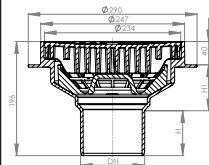
Art.-Nr. 48 878.01

DN	70	100
H	110	110



Art.-Nr. 48 501 + 48 502
Ausparungsmaß
Ø 215 mm

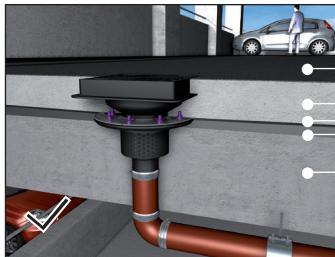
DN	100	125
H	77	83
H1	79	73



Art.-Nr. 48 503 + 48 504
Ausparungsmaß
Ø 215 mm

DN	100	125
H	77	83
H1	79	73

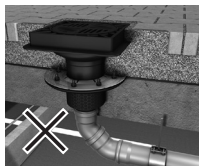
Einbaubeispiel mit Pressdichtungsflansch



● Bitumenbahn

● Estrich
● Abdichtung
● Gefälle-Estrich

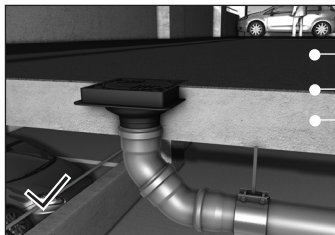
● Stahlbetondecke



Hinweis:

Nicht geeignet für den Verbau mit Pflastersteinen/losem Untergrund! Bei abweichenden Einbausituationen bitte bei KESSEL-Kundendienst kontaktieren.

Einbaubeispiel ohne Pressdichtungsflansch



● Schwarzbitumenbahn

● Estrich/Gefälle

● Stahlbetondecke

Einbauhinweise

Verbau des Pressdichtungsflansches

Das Verpressen von Dichtungsbahnen ist mit einem maximalen Anzugsmoment von 4-8 Nm (siehe Tabelle) durchzuführen. Beim Einbau in drückendes Wasser muss die Dichtungsbahn nach DIN EN 18195-5 mind. eine Dicke von 1,2 mm aufweisen. Beim Einbau mit Heißbitumen ist die Temperatur im Pressdichtungsbereich von max. 400°C kurzfristig (ca. 1-2 min) zulässig. Temperaturbeständigkeit des KESSEL-Parkdeckablaufkörpers und des Rostes ist mit 220°C so hoch, dass ein Einbau im Asphalt problemlos erfolgen kann.



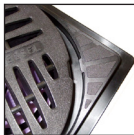
Einbringen der Dichtbahn

Hinweis:

Lippendichtung entfernen! Dadurch kann das anfallende Sickerwasser zwischen Aufsatzstück und Grundkörper, bzw. Zwischenstück sicher in den Ablauf abgeführt werden.

Werkstoff Dichtbahn	Anzugsmoment empfohlen*
Bitumenbahn	4-6 Nm
PIB mit Bitumenbahn verklebt	4-6 Nm
Bitumenbahn mit Träger-einlage aus Glasgewebe	6-8 Nm
Dichtungsbahn 48982	4-6 Nm

Lock & Lift-System:



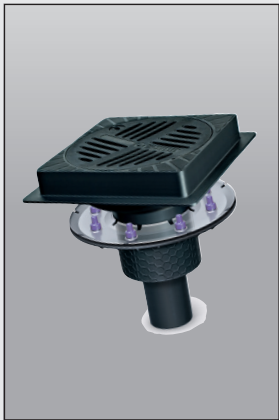
Hinweis:

Es ist darauf zu achten, dass der Rost unter der Zentriernase montiert wird!

Verriegelung des Rostes mit KESSEL-Schlüssel

Parking deck drains made of Ecoguss

Vertical outlet DN 100 / DN 125



Product advantages

- Low weight
- Simple installation
- Can be ideally adapted to the ground level thanks to its variable upper sections
- Optimum pipe cleaning by removal of sludge bucket



Place expansion joint between end cover and upper section.

Product description



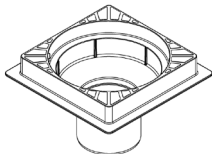
①



②



③



④

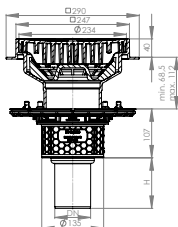
① Key

② Cover with Lock & Lift system

③ Sludge bucket

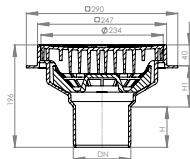
④ Drain bodies

Dimensional drawing



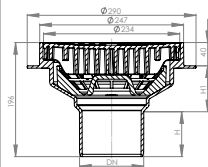
Nr. 48 878.01

DN	70	100
H	110	110



Nr. 48 501 + 48 502
Cutout dimension
Ø 215 mm

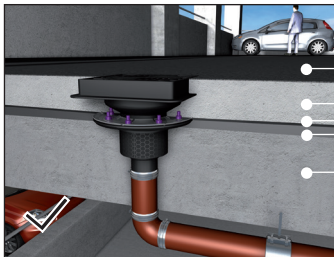
DN	100	125
H	77	83
H1	79	73



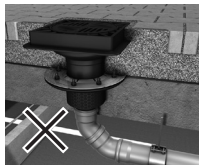
Nr. 48 503 + 48 504
Cutout dimension
Ø 215 mm

DN	100	125
H	77	83
H1	79	73

Installation example with pressure sealing flange

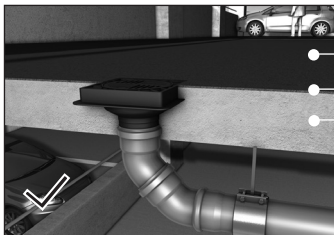


- Bitumen sheet
- Screed
- Waterproofing layer
- Sloped Screed
- Concrete steel layer



Notice:
Installation with paver stones
or non-solid surface requires
Ecoguss drain to be properly
embedded (contact KESSEL).

Installation example without pressure sealing flange



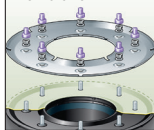
- Bitumen sheet
- Sloped Screed
- Concrete steel layer

Installation information

Installation with pressure clamping seal (Article # 48878.01 / 48811.01)

The clamping flange bolts should be tightened to a maximum torque of 4 to 8 Nm (see table) to the sealing membrane. If being installed to protect against moisture / water DIN EN 18195-5 requires a minimum membrane thickness of 1.2 mm. When sealing hot bituminous membranes to the Ecoguss drain a max temperature of 400 deg Celsius is allowed for a maximum of 1-2 minutes. The temperature resistance (220 deg Celsius) of the park drain grill / cover allows it to be installed in hot asphalt without any precautions.

Installation of membrane



Notice:

Remove the black round gas-ket which will allow any moisture / water collected on the waterproof membrane to drain into the drain body.

Sealing membrane material	Recom. torque on clamping flange*
Bituminous membrane	4-6 Nm
PIB with bituminous membrane	4-6 Nm
Bituminous layer with fiber glass	6-8 Nm
Waterproof membrane 48982	4-6 Nm

Lock & Lift system:

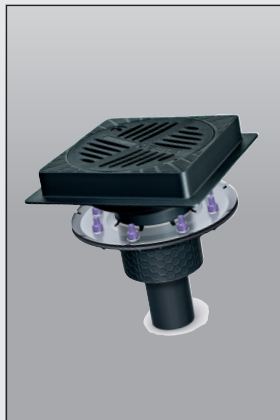


Installation of cover with KESSEL key

Notice:

Be sure that cover is inserted under the centering pin!

Siphons de parking KESSEL en Ecoguss Sortie verticale DN 100/DN 125



Avantages du produit

- Faible poids
- Pose très facile
- Grâce à l'utilisation de pièces intermédiaires, adaptable au niveau du sol
- Curage optimal des tuyaux grâce au retrait du panier à boue



Placer le joint de dilatation entre le revêtement final et la rehausse.

Description du produit



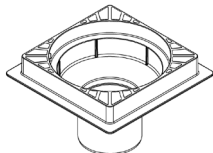
①



②



③



④

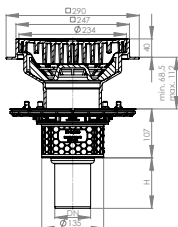
① Clé

② Grille avec système Lock & Lift

③ Panier à boue

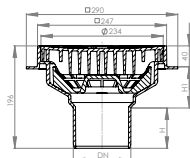
④ Corps de base

Dessin coté



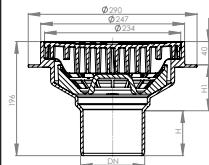
Réf. 48878.01

DN	70	100
H	110	110



Réf. 48501 + 48502
Dimensions d'encastrement
Ø 215 mm

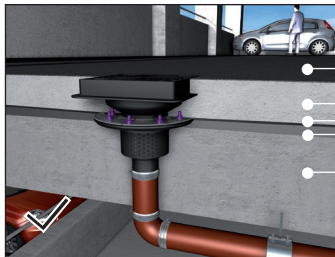
DN	100	125
H	77	83
H1	79	73



Réf. 48503 + 48504
Dimensions d'encastrement
Ø 215 mm

DN	100	125
H	77	83
H1	79	73

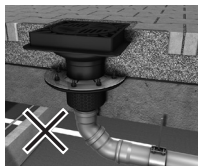
Exemple de montage avec bride de compression



● Bande bitumeuse

● Chape
● Étanchéité
● Chape en pente

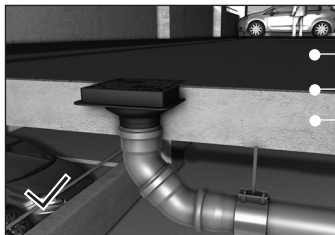
● Plafond en béton armé



Note :

Ne convient pas à un montage sur un sol pavé/meuble !
Contacter le service après-vente KESSEL en présence d'autres situations de montage.

Exemple de montage sans bride de compression



● Bande bitumeuse noire

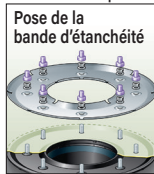
● Chape/pente

● Plafond en béton armé

Instructions de pose

Montage de la bride de compression

Observer un couple de serrage maximal de 4 à 8 Nm (voir tableau) pour la compression des bandes d'étanchéité. En cas de pose dans des eaux poussantes, la bande d'étanchéité selon DIN 18195-5 doit présenter une épaisseur d'au moins 1,2 mm. En cas de pose avec du bitume chaud, une température maximale de 400 °C est autorisée brièvement (env. 1 à 2 min) près de la bride de compression. Avec une valeur de 220 °C, la résistance aux températures du corps du siphon de parking KESSEL et de la grille est si élevée qu'il peut être installé dans l'asphalte sans aucun problème.



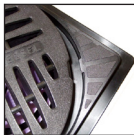
Pose de la bande d'étanchéité

Note :

Enlever le joint à lèvres! Il s'agit d'une précaution afin que les eaux d'infiltration puissent s'évacuer entre la rehausse et le corps de base ou la pièce intermédiaire dans l'écoulement.

Matière de la bande d'étanchéité	Couple de serrage recommandé*
Bande bitumeuse	4-6 Nm
PIB collé sur bande bitumeuse	4-6 Nm
Bande bitumeuse avec couche support en tissu	6-8 Nm
de verre textile	4-6 Nm
Bande d'étanchéité 48982	4-6 Nm

Système Lock & Lift :



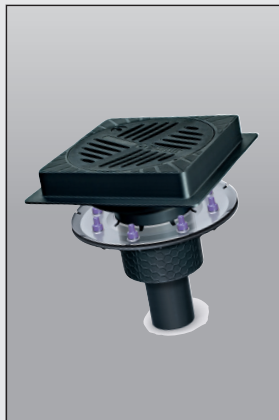
Note :

Veiller à ce que la grille soit montée sous le plot de centrage !

Verrouillage de la grille avec clé KESSEL

Scarichi per parcheggio KESSEL in Ecoguss

Scarico verticale DN 100 / DN 125



Vantaggi del prodotto

- **Peso ridotto**
- **Installazione semplicissima**
- **L'uso delle prolunghe permette l'adattamento a qualsiasi livello del pavimento**
- **Pulizia dei tubi ottimale tramite l'estrazione del cestello raccolto fanghi**



Posare il giunto di dilatazione tra il rivestimento finale ed il rialzo.

Descrizione del prodotto



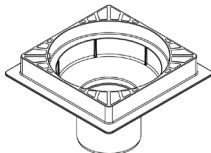
①



②



③



④

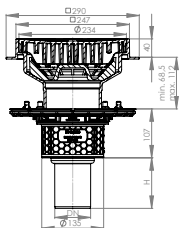
① Chiave

② Griglia con sistema Lock & Lift

③ Cestello raccolta fanghi

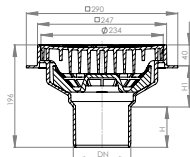
④ Corpo base

Disegno



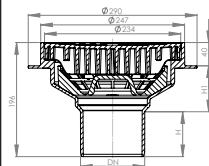
Codice articolo 48878.01

DN	70	100
H	110	110



Codice articolo 48501 +
48502
Dimensioni di installazione
Ø 215 mm

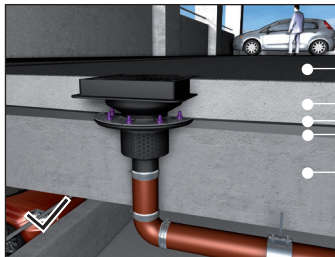
DN	100	125
H	77	83
H1	79	73



Codice articolo 48503 +
48504
Dimensioni di installazione
Ø 215 mm

DN	100	125
H	77	83
H1	79	73

Esempio di installazione con flangia di tenuta a pressione



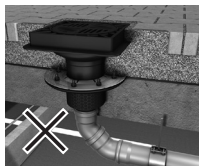
● Guaina di bitume

● Massetto

● Guarnizione termo-saldata

● Pendenza massetto

● Soletta di cemento armato



Avvertenza:

Non adatto all'installazione con pietre da pavimentazione/sottofondi instabili! Contattare il servizio clienti KESSEL in presenza di situazioni di posa diverse dal previsto.

Esempio di installazione senza flangia di tenuta a pressione



● Guaina di bitume nera

● Massetto/pendenza

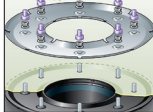
● Soletta di cemento armato

Indicazioni per l'installazione

Montaggio della flangia di tenuta a pressione

La pressatura delle guaine impermeabilizzanti deve essere eseguita con un momento di serraggio massimo da 4 a 8 Nm (vedere la tabella). In caso di installazione in presenza di pressione idrica, a norma DIN EN 18195-5, la guaina impermeabilizzante deve presentare uno spessore minimo di 1,2 mm. In caso di installazione nel bitume caldo, la temperatura massima nell'area della flangia di tenuta a pressione può essere temporaneamente (per circa 1-2 minuti) di 400 °C. La resistenza alla temperatura del corpo dello scarico per parcheggio KESSEL e della griglia, pari a 220 °C, è alta al punto che la posa nell'asfalto non rappresenta

Applicazione della guaina impermeabilizzante



Avvertenza:

Rimuovere la guarnizione a labbro! In questo modo, l'acqua di infiltrazione prodottasi può essere incanalata in sicurezza nello scarico tra il rialzo e il corpo base o la prolunga

Materiale della guaina impermeabilizzante

Momento di serraggio raccomandato*

Guaina di bitume

4-6 Nm

PIB incollato alla

4-6 Nm

guaina di bitume

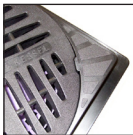
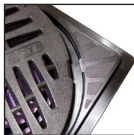
Guaina di bitume con rinforzo portante di tessuto di vetro

6-8 Nm

Guaina impermeabilizzante 48982

4-6 Nm

Sistema Lock & Lift:

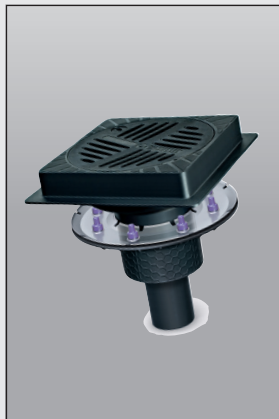


bloccaggio della griglia con chiave KESSEL

Avvertenza:

È importante accertare che la griglia sia montata sotto al perno di centratura.

KESSEL-afvoeren voor parkeergarage van Ecoguss Onder-uitloop DN 100 / DN 125



Productvoordelen

- Lichtgewicht
- Zeer eenvoudige inbouw
- Met tussenstukken is aanpassing aan elke vloerhoogte mogelijk
- Optimale buisreiniging dankzij uitneembare vuilvangers



Dilatatievoeg tussen eindafdekking en opzetstuk plaatsen.

Productomschrijving



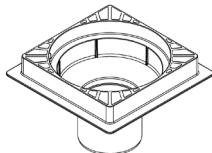
①



②



③



④

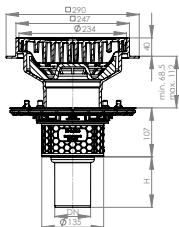
① Sleutel

② Rooster met Lock & Lift-
systeem

③ Vuilvanger

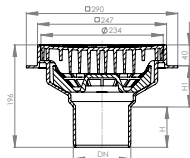
④ Basiselement

Technische tekening



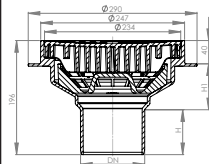
Art.nr. 48878.01

DN	70	100
H	110	110



Art.nr. 48501 + 48502
Uitsparingsmaat
Ø 215 mm

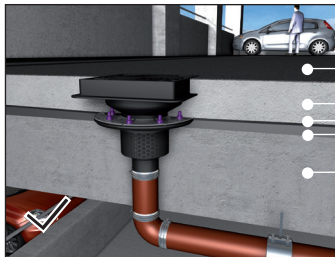
DN	100	125
H	77	83
H1	79	73



Art.nr. 48503 + 48504
Uitsparingsmaat
Ø 215 mm

DN	100	125
H	77	83
H1	79	73

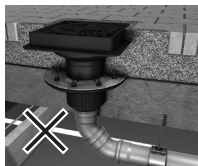
Inbouwvoorbeeld met persafdichtingsflens



● Bitumenstrook

● Dekvloer
● Afdichting
● Vervallaag

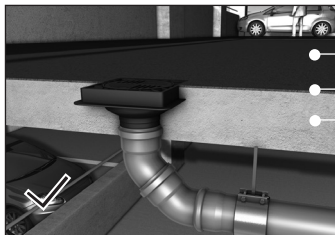
● Ondervloer van
gewapend beton



Opmerking:

Niet geschikt voor inbouw
in straatstenen of een losse
ondergrond! Neem bij afwij-
kende inbouwsituaties
contact op met de KESSEL-
klantenservice.

Inbouwvoorbeeld zonder persafdichtingsflens



● Zwarte bitumenstrook

● Dekvloer/verval

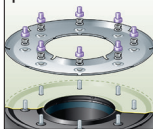
● Ondervloer van
gewapend beton

Inbouw instructies

Installatie van de persafdichtingsflens

De afdichtingsstroken moeten worden vastgeperst met een maximaal aandraai-moment van 4 – 8 Nm (zie de tabel). Bij inbouw in drukkend water moet de afdichtingsstrook volgens DIN EN 18195-5 minstens 1,2 mm dik zijn. Bij het branden van bitumen kan het stuk rond de persafdichtingsflens tijdelijk (ca. 1 – 2 minuten) temperaturen van maximaal 400 °C weerstaan. De temperatuurbestendigheid van KESSEL-afvoeren voor parkeergarage en het rooster is met 220 °C hoog genoeg om inbouw in asfalt zonder problemen mogelijk te maken.

De afdichtbaan plaatsen



Opmerking:

Afdichting verwijderen! Daardoor kan optredend kwelwater tussen het opzetstuk en baselement of verlengstuk veilig door de afvoer worden afgevoerd.

Materiaal afdichtingsstrook	Aanbevolen moment*
Bitumenstrook	4 – 6 Nm
PIB met bitumenstrook verlijmd	4 – 6 Nm
Bitumenstrook met onderlaag van glasvezel	6 – 8 Nm
Afdichtingsstrook 48982	4 – 6 Nm

Lock & Lift-systemem:

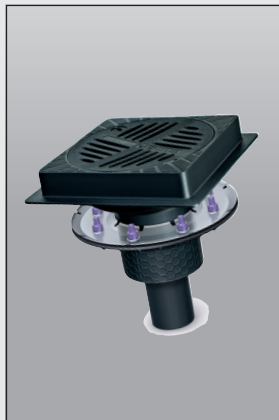


Rooster met KESSEL-sleutel
vergrendelbaar

Opmerking:

Het rooster moet onder het uitlijningsnokje worden gemonteerd!

Wpusty parkingowe KESSEL z tworzywa Ecoguss Odptyw pionowy DN 100 / DN 125



Zalety produktu

- Mały ciężar
- Prosta instalacja
- Zastosowanie przedłużeń pozwala na dopasowanie do każdego wymaganego poziomu podłogi
- Optymalne czyszczenie rury dzięki wyjmowanemu osadnikowi



Między warstwą końcową i nasadą należy wykonać szczelinę dylatacyjną.

 **KESSEL**

Stan zmian:
Numer:

01/2020
325-917

Opis wyrobu



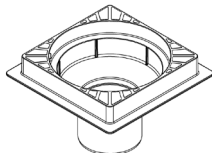
①



②



③



④

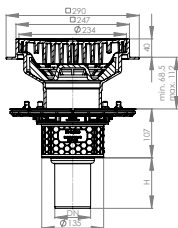
① Klucz

② Ruszt z systemem Lock &
Lift

③ Osadnik

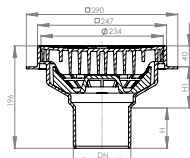
④ Korpus

Rysunek wymiarowy



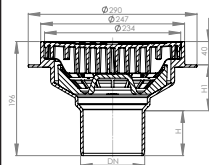
Nr art. 48878.01

DN	70	100
H	110	110



Nr art. 48501 + 48502
Wymiar otworu
Ø 215 mm

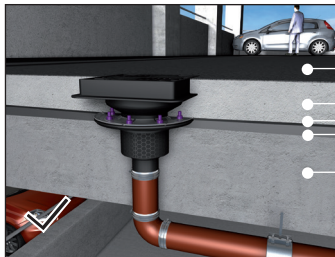
DN	100	125
H	77	83
H1	79	73



Nr art. 48503 + 48504
Wymiar otworu
Ø 215 mm

DN	100	125
H	77	83
H1	79	73

Przykład zabudowy z dociskowym kołnierzem uszczelniającym



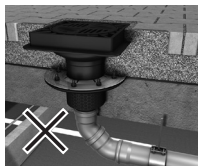
● Taśma bitumiczna

● Jastrych

● Uszczelnienie

● Jastrych (spadek)

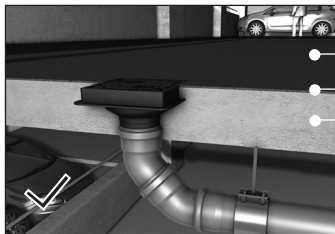
● Strop żelbetowy



Wskazówka:

Produkt nie nadaje się do zabudowy w kamieniu brukowym lub luźnym podłożu! W przypadku odmiennych sytuacji zabudowy prosimy o kontakt z serwisem klienta KESSEL.

Przykład zabudowy bez dociskowego kołnierza uszczelniającego



● Czarna taśma bitumiczna

● Jastrych/spadek

● Strop żelbetowy

Wskazówki dotyczące zabudowy

Zabudowa dociskowego kołnierza uszczelniającego

Dociskanie taśm uszczelniających należy wykonać z maksymalnym momentem dociągającym 4-8 Nm (patrz tabela). Podczas zabudowy w warunkach z wodą napierającą taśma uszczelniająca musi zgodnie z normą DIN 18195-5 mieć minimalną grubość 1,2 mm. Przy zastosowaniu bitumu gorącego dopuszczalna jest krótkotrwała (przez ok. 1-2 min) temperatura w okolicy dociskowego kołnierza uszczelniającego wynosząca maks. 400°C. Odporność temperaturowa korpusu wpustu parkingowego KESSEL i rusztu wynosi 220°C i jest na tyle wysoka, że zabudowa w asfalcie nie stanowi problemu.



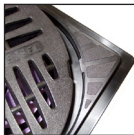
Ułożenie taśmy uszczelniającej

Wskazówka:

Wyjąć uszczelkę wargową! Dzięki temu woda przesiąkająca między nasadą a korpusem lub przedłużką może być pewnie odprowadzana do odpływu.

Tworzywo taśmy uszczelniającej	Zalecany* moment dociągający
Taśma bitumiczna	4-6 Nm
Folia PIB klejona z taśmą bitumiczną	4-6 Nm
Taśma bitumiczna z wkładką nośną z tkaniny z włókna szklanego	6-8 Nm
Taśma uszczelniająca 48982	4-6 Nm

System Lock & Lift:



Blokada rusztu kluczem KESSEL

Wskazówka:

Zwrócić uwagę na to, aby ruszt był zamontowany pod wypustką centrującą!

